



Las dimensiones estan listadas en las páginas siguientes debajo de cada artículo expresadas en pulgadas solo para propósito de estimación. Sujetas a cambios sin previo aviso.

CONEXIONES DE HIERRO MALEABLE

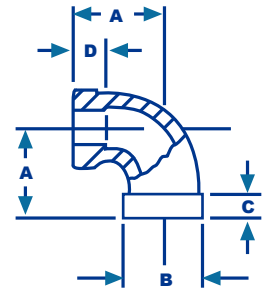
CONEXIONES
CIFUNSA®



Codo de 90° REF

90° elbows, banded

150 lbs.
Hierro maleable



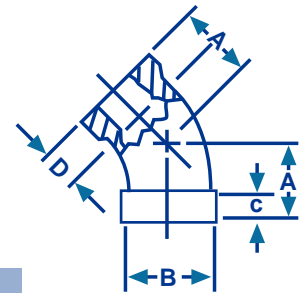
MEDIDA	A	B	C	D
1/8"	0.690	0.690	0.208	0.250
1/4"	0.810	0.840	0.210	0.320
3/8"	0.950	1.010	0.230	0.360
1/2"	1.120	1.200	0.250	0.430
3/4"	1.310	1.460	0.270	0.500
1"	1.500	1.770	0.300	0.580
1 1/4"	1.750	2.150	0.340	0.670
1 1/2"	1.950	2.430	0.370	0.700
2"	2.250	2.960	0.420	0.750
2 1/2"	2.700	3.590	0.480	0.920
3"	3.080	4.280	0.550	0.980
4"	3.790	5.400	0.660	1.080
6"	5.130	7.770	0.900	1.280



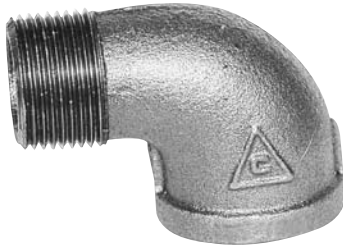
Codo de 45° REF

45° elbows, banded

150 lbs.
Hierro maleable

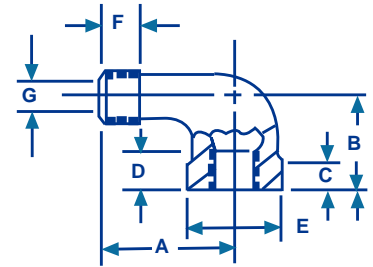


MEDIDA	A	B	C	D
1/4"	0.730	0.840	0.210	0.320
3/8"	0.800	1.010	0.230	0.360
1/2"	0.880	1.200	0.250	0.430
3/4"	0.980	1.460	0.270	0.500
1"	1.120	1.770	0.300	0.580
1 1/4"	1.290	2.150	0.340	0.670
1 1/2"	1.430	2.430	0.370	0.700
2"	1.680	2.960	0.420	0.750
2 1/2"	1.950	3.590	0.480	0.920
3"	2.170	4.280	0.550	0.980
4"	2.610	5.400	0.660	1.080



Codo niple 90°
90° street elbows

150 lbs.
Hierro maleable

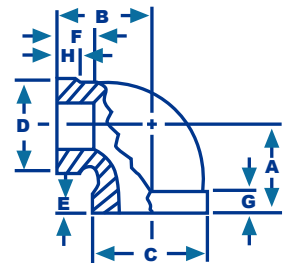


MEDIDA	A	B	C	D	E	F	G
1/4"	1.190	0.810	0.210	0.320	0.840	0.400	0.260
3/8"	1.440	0.950	0.230	0.360	1.010	0.410	0.370
1/2"	1.630	1.120	0.250	0.430	1.200	0.530	0.510
3/4"	1.890	1.310	0.270	0.500	1.460	0.550	0.690
1"	2.140	1.500	0.300	0.580	1.770	0.680	0.910
1 1/4"	2.450	1.750	0.340	0.670	2.150	0.710	1.190
1 1/2"	2.690	1.940	0.370	0.700	2.430	0.720	1.390
2"	3.260	2.250	0.420	0.750	2.960	0.760	1.790



Codo reducción de 90°
90° reducing elbows, banded

150 lbs.
Hierro maleable



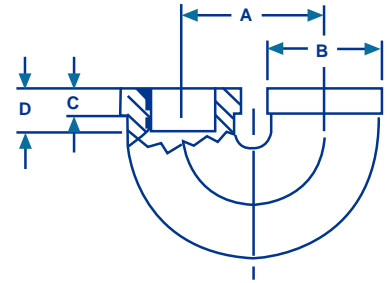
MEDIDA	A	B	C	D	E	F	G	H
1/2 x 3/8"	1.040	1.030	1.200	1.010	0.430	0.360	0.250	0.230
3/4 x 1/2"	1.200	1.220	1.460	1.200	0.500	0.430	0.270	0.250
1 x 1/2"	1.260	1.360	1.770	1.200	0.580	0.430	0.300	0.250
1 x 3/4"	1.370	1.450	1.770	1.460	0.580	0.500	0.300	0.270
1 1/4 x 3/4"	1.450	1.620	2.150	1.460	0.670	0.500	0.340	0.270
1 1/4 x 1"	1.580	1.670	2.150	1.770	0.670	0.580	0.340	0.300
1 1/2 x 1"	1.650	1.800	2.430	1.770	0.700	0.580	0.370	0.300
1 1/2 x 1 1/4"	1.820	1.880	2.430	2.150	0.700	0.670	0.370	0.340
2 x 1 1/4"	1.900	2.100	2.960	2.150	0.750	0.670	0.420	0.340
2 x 1 1/2"	2.020	2.160	2.960	2.430	0.750	0.700	0.420	0.370



Codo retorno

Return bend open, banded

**150 lbs.
Hierro maleable**



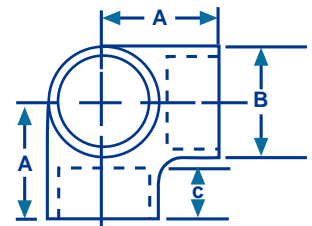
MEDIDA	A	B	C	D
1/2"	1.500	1.200	0.250	0.430
3/4"	2.000	1.460	0.270	0.500



Codo rincón

Side outlet elbows, plain

**150 lbs.
Hierro maleable**



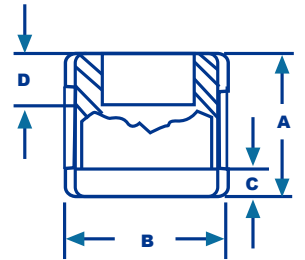
MEDIDA	A	B	C
1/2"	1.10	1.000	0.43
3/4"	1.300	1.290	0.50
1"	1.500	1.520	0.58



Cople reforzado

Couplings banded

**150 lbs.
Hierro maleable**



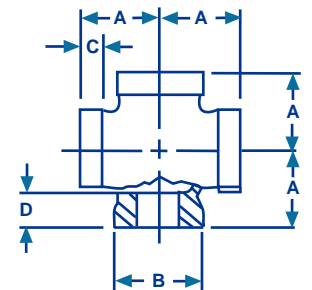
MEDIDA	A	B	C	D
1/4"	1.060	0.840	0.210	0.320
3/8"	1.160	1.010	0.230	0.360
1/2"	1.340	1.200	0.250	0.430
3/4"	1.520	1.460	0.270	0.500
1"	1.670	1.770	0.300	0.580
1 1/4"	1.930	2.150	0.340	0.670
1 1/2"	2.180	2.430	0.370	0.700
2"	2.530	2.960	0.420	0.750
2 1/2"	2.680	3.590	0.480	0.920
3"	3.180	4.280	0.550	0.980
4"	3.690	5.400	0.660	1.080



Cruz reforzada

Crosses banded

**150 lbs.
Hierro maleable**



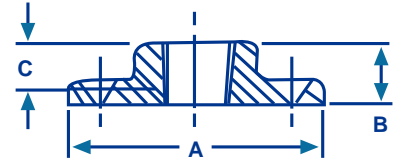
MEDIDA	A	B	C	D
1/2"	1.120	1.200	0.250	0.430
3/4"	1.310	1.460	0.270	0.500
1"	1.500	1.770	0.300	0.580
1 1/4"	1.750	2.150	0.340	0.670
1 1/2"	1.940	2.430	0.370	0.700
2"	2.250	2.960	0.420	0.750
2 1/2"	2.700	3.590	0.480	0.920
3"	3.080	4.280	0.550	0.980
4"	3.790	5.400	0.660	1.080



Flange de piso

Floor flanges

**150 lbs.
Hierro maleable**



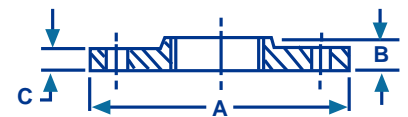
MEDIDA	A	B	C
1/2"	3.010	0.550	0.390
3/4"	3.370	0.630	0.430
1"	3.780	0.670	0.490
1 1/4"	4.190	0.750	0.510
1 1/2"	4.590	0.870	0.610
2"	5.180	0.980	0.750



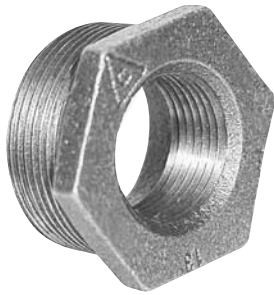
Unión flange

Companion flanges

**150 lbs.
Hierro maleable**



MEDIDA	A	B	C
1"	4.250	0.687	0.437
1 1/4"	4.625	0.850	0.500
1 1/2"	5.000	0.875	0.562
2"	6.000	1.000	0.625
2 1/2"	7.000	1.125	0.687
3"	7.526	1.245	0.805
4"	8.975	1.370	1.005
6"	10.995	1.600	1.035

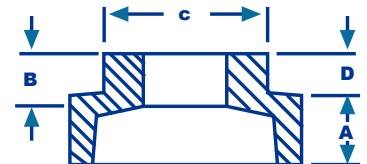
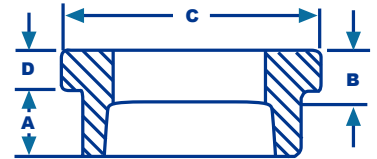


Reducción bushing

Bushings

150 lbs.

Hierro maleable



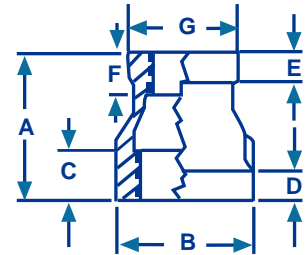
MEDIDA	A	B	C	D
3/8 x 1/8"	0.480	0.250	0.680	0.160
3/8 x 1/4"	0.480	0.400	0.680	0.160
1/2 x 1/4"	0.560	0.320	0.870	0.190
1/2 x 3/8"	0.560	0.410	0.870	0.190
3/4 x 1/4"	0.630	0.320	1.150	0.220
3/4 x 3/8"	0.630	0.360	1.150	0.220
3/4 x 1/2"	0.630	0.530	1.150	0.220
1 x 1/4"	0.750	0.320	1.120	0.300
1 x 3/8"	0.750	0.360	1.120	0.300
1 x 1/2"	0.750	0.430	1.420	0.250
1 x 3/4"	0.750	0.500	1.420	0.250
1 1/4 x 1/2"	0.800	0.430	1.340	0.340
1 1/4 x 3/4"	0.800	0.500	1.760	0.280
1 1/4 x 1"	0.800	0.580	1.760	0.280
1 1/2 x 1/2"	0.830	0.430	1.340	0.370
1 1/2 x 3/4"	0.830	0.500	1.630	0.370
1 1/2 x 1"	0.830	0.580	2.000	0.310
1 1/2 x 1 1/4"	0.830	0.710	2.000	0.310
2 x 1/2"	0.880	0.430	1.340	0.410
2 x 3/4"	0.880	0.500	1.630	0.410
2 x 1"	0.880	0.580	1.950	0.410
2 x 1 1/4"	0.880	0.670	2.480	0.340
2 x 1 1/2"	0.880	0.700	2.480	0.340
2 1/2 x 1"	1.070	0.580	1.950	0.440
2 1/2 x 1 1/4"	1.070	0.670	2.390	0.440
2 1/2 x 1 1/2"	1.070	0.700	2.680	0.440
2 1/2 x 2"	1.070	0.750	2.980	0.370
3 x 1"	1.130	0.580	1.950	0.480
3 x 1 1/4"	1.130	0.670	2.390	0.480
3 x 1 1/2"	1.130	0.700	2.680	0.480
3 x 2"	1.130	0.750	3.280	0.480
3 x 2 1/2"	1.130	0.920	3.860	0.400
4 x 1"	1.220	0.580	1.950	0.600
4 x 1 1/4"	1.220	0.67	2.390	0.600
4 x 1 1/2"	1.220	0.700	2.680	0.600
4 x 2"	1.220	0.750	3.280	0.600
4 x 2 1/2"	1.220	0.920	3.860	0.600
4 x 3"	1.220	0.980	4.620	0.500
6 x 2"	1.400	0.750	3.280	0.750
6 x 2 1/2"	1.400	0.920	3.860	0.750
6 x 3"	1.400	0.980	4.620	0.750
6 x 4"	1.400	1.080	5.790	0.750



Reducción Campana

Reducing Couplings

150 lbs.
Hierro maleable



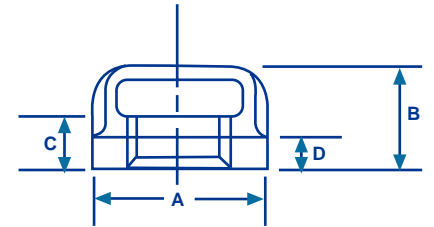
TAMAÑO	A	B	C	D	E	F	G
3/8 x 1/4"	1.130	1.010	0.360	0.230	0.210	0.320	0.840
1/2 x 1/4"	1.250	1.200	0.430	0.250	0.210	0.320	0.840
1/2 x 3/8"	1.250	1.200	0.430	0.250	0.230	0.360	1.010
3/4 x 1/4"	1.440	1.460	0.500	0.270	0.210	0.320	0.840
3/4 x 3/8"	1.440	1.460	0.500	0.270	0.230	0.360	1.010
3/4 x 1/2"	1.440	1.460	0.500	0.270	0.250	0.430	1.200
1 x 1/4"	1.690	1.770	0.580	0.300	0.210	0.320	0.840
1 x 3/8"	1.690	1.770	0.580	0.300	0.230	0.360	1.010
1 x 1/2"	1.690	1.770	0.580	0.300	0.250	0.430	1.200
1 x 3/4"	1.690	1.770	0.580	0.300	0.270	0.500	1.460
1 1/4 x 1/2"	2.060	2.150	0.670	0.340	0.250	0.430	1.200
1 1/4 x 3/4"	2.060	2.150	0.670	0.340	0.270	0.500	1.460
1 1/4 x 1"	2.060	2.150	0.670	0.340	0.300	0.580	1.770
1 1/2 x 1/2"	2.310	2.430	0.700	0.370	0.250	0.430	1.200
1 1/2 x 3/4"	2.310	2.430	0.700	0.370	0.270	0.500	1.460
1 1/2 x 1"	2.310	2.430	0.700	0.370	0.300	0.580	1.770
1 1/2 x 1 1/4"	2.310	2.430	0.700	0.370	0.340	0.670	2.150
2 x 1/2"	2.810	2.960	0.750	0.420	0.250	0.430	1.200
2 x 3/4"	2.810	2.960	0.750	0.420	0.270	0.500	1.460
2 x 1"	2.810	2.960	0.750	0.420	0.300	0.580	1.770
2 x 1 1/4"	2.810	2.960	0.750	0.420	0.340	0.670	2.150
2 x 1 1/2"	2.810	2.960	0.750	0.420	0.370	0.700	2.430
2 1/2 x 1/2"	3.250	3.590	0.920	0.480	0.250	0.430	1.200
2 1/2 x 2"	3.250	3.590	0.920	0.480	0.420	0.750	2.960
3 x 2	3.690	4.280	0.980	0.550	0.420	0.750	2.960
3 x 2 1/2	3.690	4.280	0.980	0.550	0.480	0.920	3.590
4 x 3	4.380	5.400	1.080	0.660	0.550	0.980	4.280



Tapón Cachucha

Caps Banded

**150 lbs.
Hierro maleable**



MEDIDA	A	B	C	D
3/8"	1.010	0.740	0.360	0.230
1/2"	1.200	0.870	0.430	0.250
3/4"	1.460	0.970	0.500	0.270
1"	1.770	1.160	0.580	0.300
1 1/4"	2.150	1.280	0.670	0.340
1 1/2"	2.430	1.330	0.700	0.370
2"	2.460	1.450	0.750	0.420
2 1/2"	3.590	1.700	0.920	0.480
3"	4.280	1.800	0.980	0.550
4"	5.400	2.080	1.080	0.660



Tapón Macho

Plugs

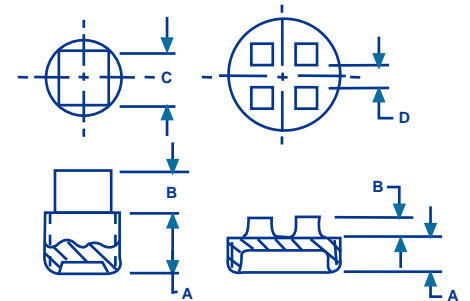
**150 lbs.
Hierro maleable**

CABEZA CUADRADA

CABEZA CON RANURAS

3/8" - 3"

4" - 6"



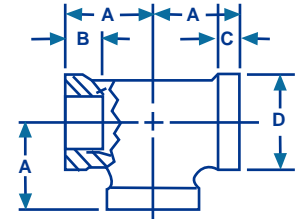
MEDIDA	A	B	C	D
3/8"	0.480	0.310	0.4375	-
1/2"	0.560	0.380	0.5625	-
3/4"	0.630	0.440	0.6250	-
1"	0.750	0.500	0.8125	-
1 1/4"	0.800	0.560	0.9375	-
1 1/2"	0.830	0.620	1.1250	-
2"	0.880	0.680	1.3125	-
2 1/2"	1.070	0.740	1.5000	-
3"	1.130	0.800	1.6875	-
4"	1.220	1.000	-	0.880
6"	1.400	1.250	-	1.250



Tee Reforzada

Tees Banded

**150 lbs.
Hierro maleable**



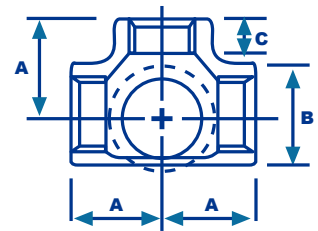
MEDIDA	A	B	C	D
1/4"	0.810	0.320	0.210	0.840
3/8"	0.950	0.360	0.230	1.010
1/2"	1.120	0.430	0.250	1.200
3/4"	1.310	0.500	0.270	1.460
1"	1.500	0.580	0.300	1.770
1 1/4"	1.750	0.670	0.340	2.150
1 1/2"	1.950	0.700	0.370	2.430
2"	2.250	0.750	0.420	2.960
2 1/2"	2.700	0.920	0.480	3.590
3"	3.080	0.980	0.550	4.280
4"	3.790	1.080	0.660	5.400
6"	5.130	1.280	0.900	7.770



Tee Rincón

Side outlet tees, plain

**150 lbs.
Hierro maleable**



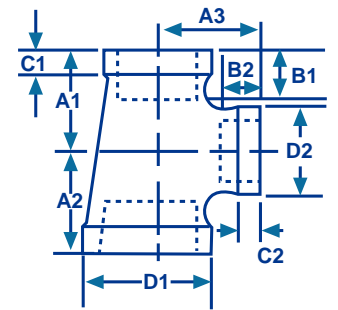
MEDIDA	A	B	C
1/2"	1.10	1.140	0.430
3/4"	1.300	1.390	0.500
1"	1.500	1.705	0.580



Tee Reducción

Reducing tees, banded

**150 lbs.
Hierro maleable**



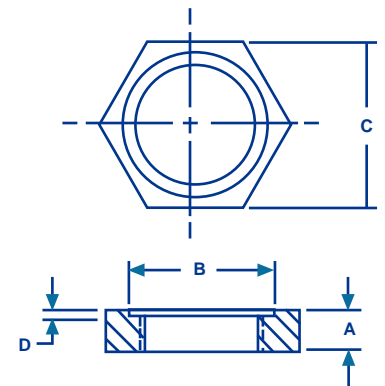
TAMAÑO	A1	A2	A3	B1	B2	C1	C2	D1	D2
3/4 x 1/2"	1.200	1.200	1.220	0.500	0.430	0.270	0.250	1.460	1.200
1 x 3/4"	1.370	1.370	1.450	0.580	0.500	0.300	0.270	1.770	1.460
1 x 1/2"	1.260	1.260	1.360	0.580	0.430	0.300	0.250	1.770	1.200
1 1/2 x 1"	1.650	1.650	1.800	0.700	0.580	0.370	0.300	2.430	1.770
2 x 1/2"	1.500	1.500	1.870	0.750	0.430	0.480	0.250	2.960	1.200
2 x 1 1/2"	2.020	2.020	2.160	0.750	0.700	0.480	0.370	2.960	2.430



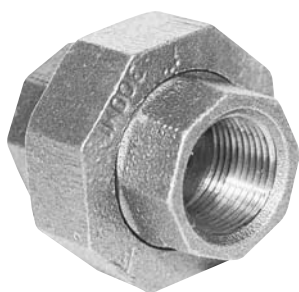
Tuerca Presión

Locknuts

**150 lbs.
Hierro maleable**



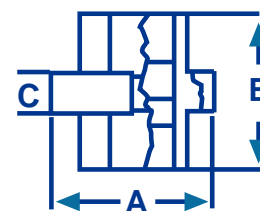
MEDIDA	A	B	C	D
1/2"	0.310	0.970	0.180	0.060
3/4"	0.340	1.230	1.430	0.060
1"	0.380	1.500	1.750	0.060
1 1/4"	0.420	1.860	2.100	0.060
1 1/2"	0.470	2.120	2.350	0.060
2"	0.530	2.630	2.880	0.090



Tuerca Unión

Unions, brass to iron seat

150 lbs.
Hierro maleable



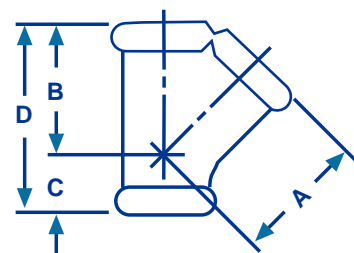
MEDIDA	A	B	C
1/4"	1.290	1.440	0.560
3/8"	1.440	1.610	0.630
1/2"	1.760	1.790	0.700
3/4"	1.960	2.020	0.712
1"	2.160	2.120	0.780
1 1/4"	2.750	2.260	0.860
1 1/2"	2.990	2.440	0.880
2"	3.620	2.750	1.000
2 1/2"	4.540	3.260	1.200
3"	5.060	3.530	1.220
4"	6.080	3.950	1.430



Y Griega

Y branches, banded

150 lbs.
Hierro maleable



MEDIDA	A	B	C	D
1/2"	1.710	1.710	0.610	2.320
3/4"	2.050	2.050	0.720	2.770
1"	2.430	2.430	0.850	3.280
1 1/4"	2.920	2.920	1.020	3.940
1 1/2"	3.280	3.280	1.100	4.380
2"	3.930	3.930	1.240	5.170
2 1/2"	4.730	4.730	1.520	6.250
3"	5.550	5.550	1.710	7.260
4"	6.970	6.970	2.010	8.980

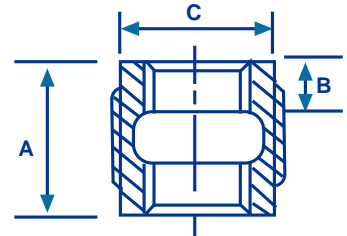


Cople Liso

Coupling, plain

150 lbs.

Hierro maleable



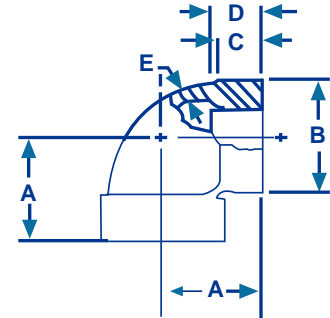
MEDIDA	A	B	C
3/8"	1.160	0.360	0.870
1/2"	1.340	0.430	1.050
3/4"	1.520	0.500	1.318
1"	1.670	0.580	1.605
1 1/4"	1.930	0.670	1.950
1 1/2"	2.150	0.700	2.375
2"	2.530	0.750	2.575
2 1/2"	2.880	0.920	3.320
3"	3.180	0.980	3.950
4"	3.690	1.080	5.080



Codo de 90° REF

90° elbows, banded

**300 lbs.
Hierro maleable**



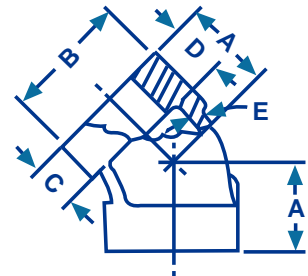
MEDIDAS	A	B	C	D	E
3/8"	1.060	1.120	0.440	0.470	0.150
1/2"	1.250	1.340	0.500	0.570	0.160
3/4"	1.440	1.630	0.560	0.640	0.180
1"	1.630	1.950	0.620	0.750	0.200
1 1/4"	1.940	2.390	0.690	0.840	0.220
1 1/2"	2.130	2.680	0.750	0.870	0.240
2"	2.500	3.280	0.840	1.000	0.260
2 1/2"	2.940	3.860	0.940	1.170	0.310
3"	3.380	4.620	1.000	1.230	0.350
4"	4.442	5.955	1.181	1.425	0.460



Codo de 45° REF

45° elbows, banded

**300 lbs.
Hierro maleable**



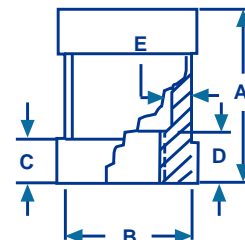
MEDIDAS	A	B	C	D	E
1/2"	1.000	1.340	0.500	0.570	0.16
3/4"	1.130	1.630	0.560	0.640	0.18
1"	1.310	1.950	0.620	0.750	0.20
1 1/4"	1.500	2.390	0.690	0.840	0.22
1 1/2"	1.690	2.680	0.750	0.870	0.24
2"	2.000	3.280	0.840	1.000	0.26



Cople Reforzado

Couplings banded

300 lbs.
Hierro maleable



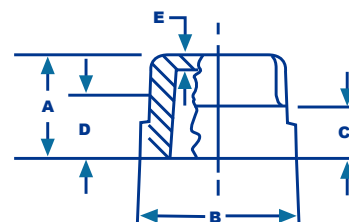
MEDIDA	A	B	C	D	E
1/2"	1.870	1.340	0.500	0.570	0.16
3/4"	2.120	1.630	0.560	0.640	0.18
1"	2.370	1.950	0.620	0.750	0.20
1 1/4"	2.870	2.390	0.690	0.870	0.22
1 1/2"	2.870	2.680	0.750	0.870	0.24
2"	3.620	3.280	0.840	1.000	0.26



Tapón Cachucha

Caps Banded

300 lbs.
Hierro maleable



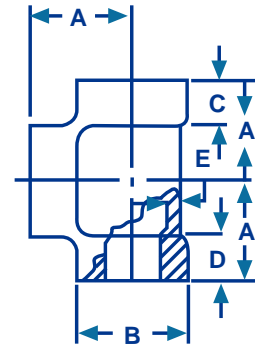
MEDIDA	A	B	C	D	E
1/2"	0.980	1.340	0.500	0.570	0.16
3/4"	1.080	1.630	0.560	0.640	0.18
1"	1.260	1.950	0.620	0.750	0.20
1 1/4"	1.380	2.390	0.690	0.840	0.22
1 1/2"	1.430	2.680	0.750	0.870	0.24
2"	1.680	3.280	0.840	1.000	0.26



Tee Reforzada

Tees Banded

300 lbs.
Hierro maleable



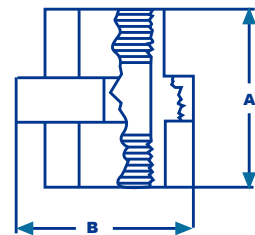
MEDIDA	A	B	C	D	E
3/8"	1.060	1.120	0.440	0.470	0.150
1/2"	1.250	1.340	0.500	0.570	0.160
3/4"	1.440	1.630	0.560	0.640	0.180
1"	1.630	1.950	0.620	0.750	0.200
1 1/4"	1.940	2.390	0.690	0.840	0.220
1 1/2"	2.130	2.680	0.750	0.870	0.240
2"	2.500	3.280	0.840	1.000	0.260
2 1/2"	2.940	3.860	0.940	1.170	0.310
3"	3.380	4.620	1.000	1.230	0.350
4"	4.600	5.930	1.110	1.300	0.460



Tuerca Unión

Unions, brass to iron seat

300 lbs.
Hierro maleable



MEDIDA	A	B
1/2"	1.810	1.760
3/4"	2.120	2.150
1"	2.310	2.480
1 1/4"	2.660	3.020
1 1/2"	2.850	3.280
2"	3.230	3.960